

CITINOX[®] plus

MAGIT[®]
Dystrybucja w Polsce

... eleganckie rozwiązanie z dystansem

citinox plus® oferuje gotowe rozwiązanie praktycznie dla każdego sposobu montażu szyldów. Poprzez bliski kontakt z praktyką system ulega stałej rozbudowie i udogodnieniom. Cały system jest kompletnie produkowany w Niemczech i podlega stałej kontroli jakości. Jego obszerna funkcjonalność oraz prosta elegancja nie znajdują sobie równych. Połączenie stali nierdzewnej z perfekcyjnie obrobioną powierzchnią zapewniają systemowi doskonały wygląd.

Montaż do ściany

Mocowanie tablic różnych rozmiarów i grubości z dystansem od ściany

Montaż semaforów

Wsporniki do mocowania szyldów typu semafor

Montaż do prętów

Montaż tablic do ściany lub sufitu przy pomocy systemu prętów ze stali nierdzewnej

Montaż na linkach

Montaż tablic do ściany lub sufitu przy pomocy systemu linek


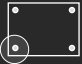

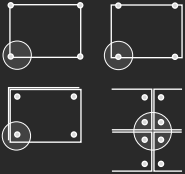

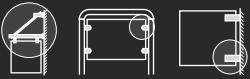

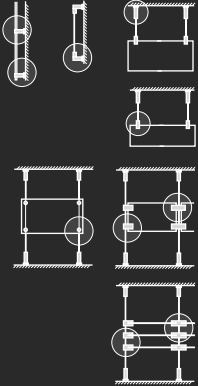
Wolnostojące

Mocowania na stawiania tablic na biurku i tablice wolnostojące

Elementy dodatkowe

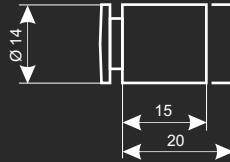
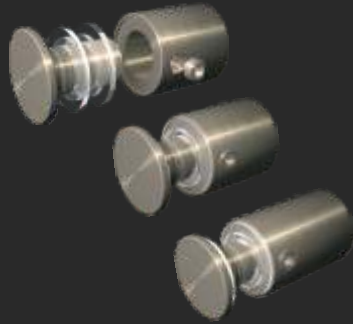
Stabilizacja i rozszerzenie elementów standardowych



			Strona	Nazwa	Rozmiar	Opis
Imbus zabezpieczający przed kradzieżą			4	Florenz	R 14	
			4	Rom	R 14	Zaokrąglona główka
			4	Stuttgart	R 18	
			5	Bonn	R 14	
			5	Berlin	R 14	
			5	Kiew	R 14	Polerowany
			6	Ufa	R 15 / 20	Ścięcie
			7	Zürich	R 30	
			7	Rhodos	R 30	Część dodatkowa do Zürich
			9	Liverpool	□ 15 / 25	Polerowany kwadrat
9	London	◇ 17 / 27	Polerowany sześciokąt			
Przykręcane			8	Nürnberg	R 16	Do tablic bez otworów
			8	Lübeck	R 20	Do tablic bez otworów
			8	Palermo	R 20	Do tablic bez otworów
			10	Wien	R 11	
			10	Linz	R 13	
			10	St. Petersburg	R 14	
			11	Madrid	R 20	
			11	München	R 40	
			12	Samara	R 15	Do montażu wstępnego
			12	Moskwa	R 20	Do podwójnych tablic
13	Barcelona	R 25				
13	Köln	R 30				
Montaż semaforów			14	Bern	R 10 / 15 / 18	Zatyczka zaokrąglona
			14	Genf	R 10 / 15 / 18	Zatyczka płaska
			15	Basel	R 10 / 15 / 18	Tuleja dystansowa (dystans od ściany)
			16	Gdańsk	R 17	
			16	Poznań	R 18	
Montaż do pręta			17	Kopenhaga		
			18	Duisburg		
			19	Lyon	R 12	
			19	Stockholm	R 14	Zginany
			20	Dublin	R 20	
			20	Belfast	R 20	
			21	Leipzig	R 17	Do wiszących tablic
			21	Krakau	R 18	Do wiszących tablic
			22	Apeldoorn	R 11	Montaż między prętem a tabliczką
			22	Rotterdam	R 14	Montaż między prętem a tabliczką
			22	Den Haag	R 17	Montaż między prętem a tabliczką
			23	Utrecht	R 11	Montaż między prętem a 2 tabliczkami
			23	Amsterdam	R 14	Montaż między prętem a 2 tabliczkami
			23	Eindhoven	R 17	Montaż między prętem a 2 tabliczkami
			24	Burgas	R 11	Tabliczka montowana przed prętem
24	Sofia	R 15	Tabliczka montowana przed prętem			
24	Varna	R 15	Tabliczka montowana przed prętem			
25	Lanzarote	R 14	Sklep			
25	Teneriffa	R 14	Sklep podwójny			

Opis	Rozmiar	Nazwa	Strona		
Automatyczne mocowanie	R 11	Marseille	26		■ Montaż na linie
	R 12	Paris	26		
	R 12	Paris A	26		
	R 14	Nizza	27		
	R 14	Helsinki	27		
Gwint	R 14	Helsinki	27		
Nadaje się do szkła	R 11	Oslo	28		
	R 17	Dortmund	28		
	R 18	Frankfurt	28		
	R 11	Schwerin	29		
	R 14	Oldenburg	29		
Montaż do linki	R 11	Lüttich	30		
Montaż do linki	R 14	Brüssel	30		
Montaż do linki	R 17	Gent	30		
Do podwójnych tablic z otworami	R 15	Budapest	31		
Połączenie wiszących swobodnie tablic	R 18	Istanbul	31		
Montaż linki	R 11	Arad	32		
Montaż linki	R 15	Bukarest	32		
Montaż do linki - podwójny	R 15	Konstanca	32		
Montaż do linki - podwójny	R 11	Anderlecht	33		
Montaż do linki - podwójny	R 14	Antwerpen	33		
Montaż do linki - podwójny	R 17	Brügge	33		
Sklep	R 14	Ibiza	34		
Sklep - podwójny	R 14	Mallorca	34		
Do tablic z otworami	R 11	Salzburg	35		■ Wolnostojące tabliczki na biurko
Do tablic z otworami	R 14	Graz	35		
Do tablic bez otworów	R 18	Bremen	36		
Do podwójnych tablic bez otworów	R 18	Kiel	36		
Do tablic bez otworów	R 18	Hamburg	37		
System do witryn	Szyna	Donau - Isar	38		■ Części dodatkowe
System do witryn		Korfu	38		
	R 40	Athen	39		
		Kos	39		
Tabliczka wolne/zajęte		Kreta	40		
					■ Legenda
		Średnica / widoczny rozmiar			
		Średnica linki /pręta			
		Kolor			
		Dystans od ściany			
		Wielkość zalecanego otworu w tablicy			
		Możliwa grubość tablicy			
		Odległość nawiercanego otworu od krawędzi tabliczki			
		Wielkość klucza			
		Opakowanie			
		Można łączyć z ...			

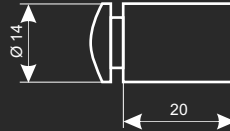
FLORENZ



- Florenz 15 / 1- 6
- Florenz 15 / 8-12
- Florenz 20 / 1-12

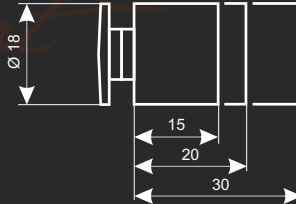
- Ø 14 mm
- 15 / 20 mm
- 1...12 mm
- Ø 10...11 mm

ROM BALLIGER KOPF



- Rom 20
- Ø 14 mm
- 20 mm
- 1...12 mm
- Ø 10...11 mm

STUTTGART



- Stuttgart 15 / 2- 5
- Stuttgart 15 / 6-10
- Stuttgart 20 / 3-10
- Stuttgart 20 / 10-18
- Stuttgart 30 / 3-18

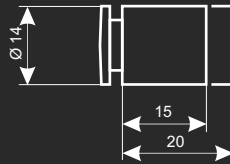
- Ø 18 mm
- 15 / 20 / 30 mm
- 2...18 mm
- Ø 11 mm



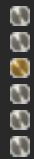
Bonn 15
Bonn 20



Ø 14 mm
15 / 20 mm
2...5 mm
Ø 11 mm



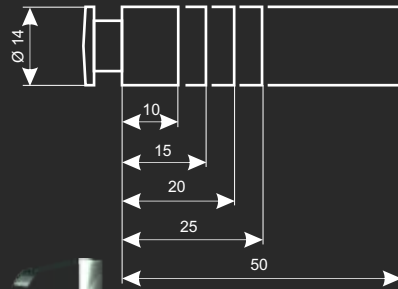
BONN



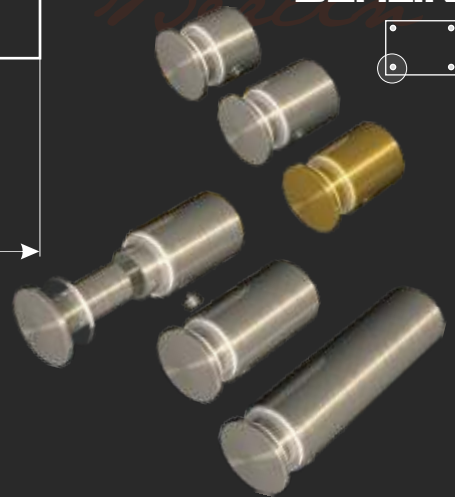
Berlin 10 / 6- 8
Berlin 15 / 5-10
G Berlin 15 / 5-10
Berlin 20 / 5-10
Berlin 25 / 5-10
Berlin 50 / 5-10



Ø 14 mm
10/15/20/25/50 mm
5...10 mm
Ø 11 mm



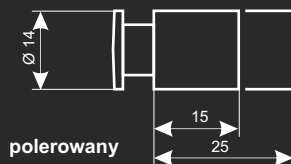
BERLIN



Kiew 15



Ø 14 mm
15 mm
6 mm
Ø 10 mm



KIEW

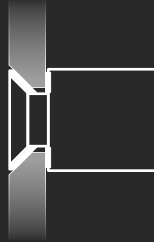
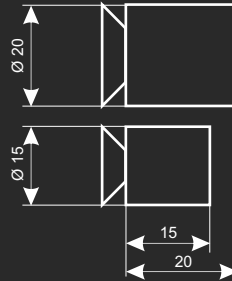


Kiew 25



Ø 14 mm
25 mm
6 / 12 mm
Ø 10 mm

UFA



Ufa 20



Ø 20 mm



20 mm



5...15 mm



Ø 12 mm

Podfrezowanie 45° na stronie Ø 21 mm



Ufa 15



Ø 15 mm



15 mm

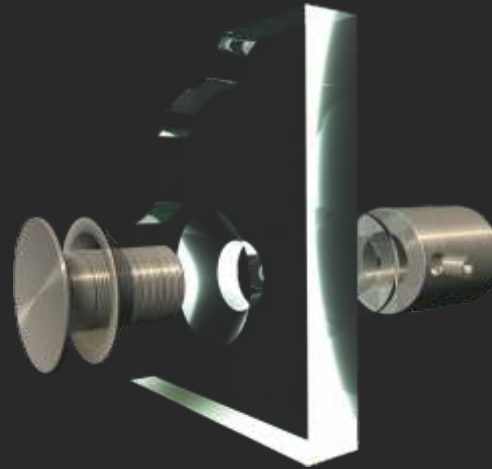
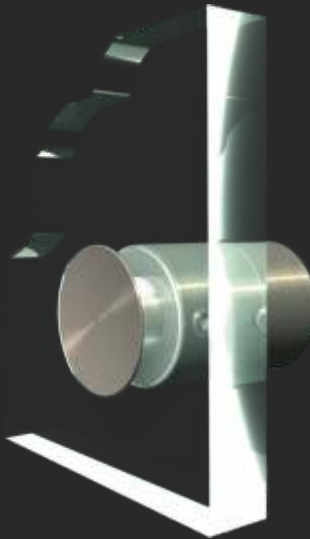


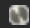
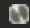
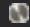
5...10 mm







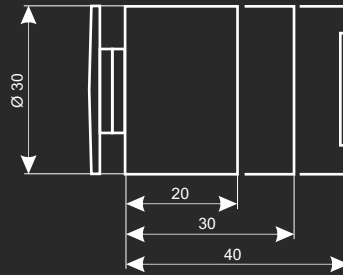
Ø 9 mm

Podfrezowanie 45° na stronie Ø 16 mm

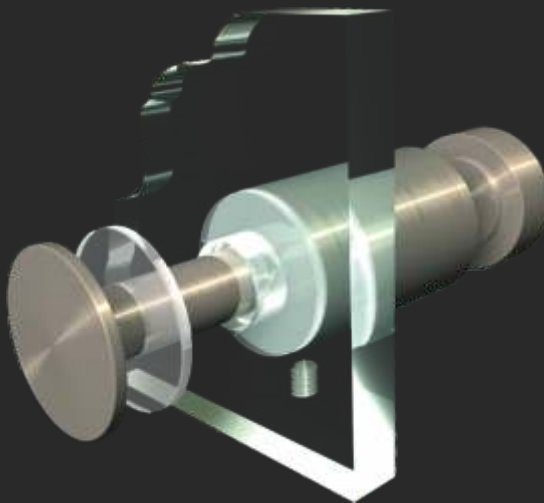
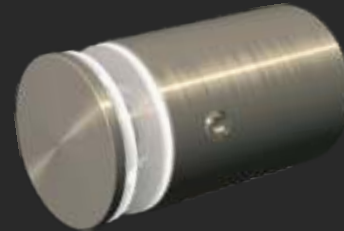
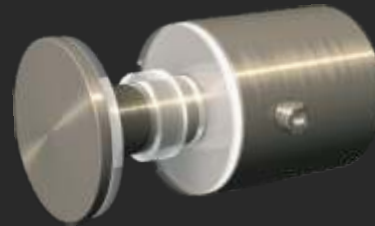
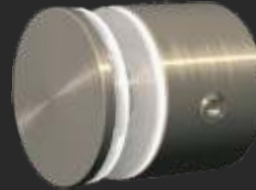


 Zürich 20 / 5- 8
 Zürich 30 / 5-12
 Zürich 40 / 5-18

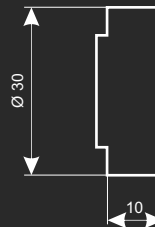
 Ø 30 mm
 20 / 30 / 40 mm
 5...18 mm
 Ø 18...20 mm



Zürich **ZÜRICH**

 Rhodos
 Ø 30 mm
 + 10 mm
 Zürich 40



Rhodos **RHODOS**




NÜRNBERG

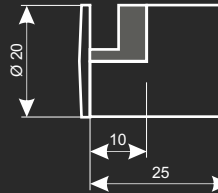
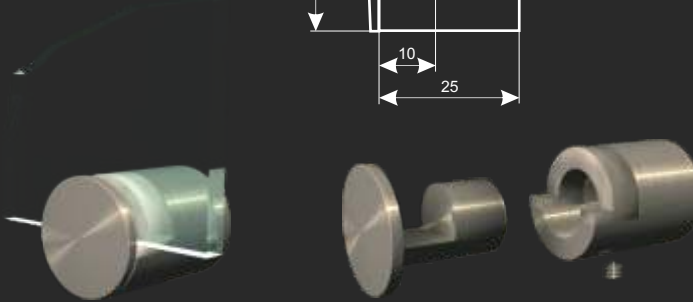


Nürnberg 5
Nürnberg 6
Nürnberg 8



Ø 16 mm
16 mm
5 / 6 / 8 mm
nie dotyczy

LÜBECK

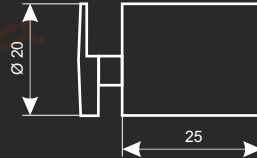
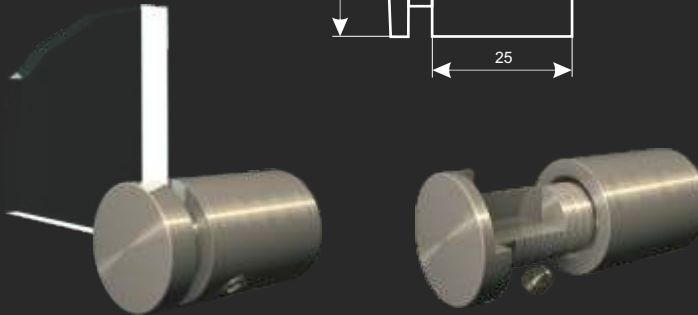


Lübeck



Ø 20 mm
21 / 19 / 17 mm
4 / 6 / 8 mm
nie dotyczy

PALERMO







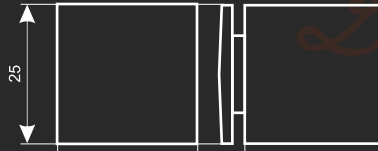
Palermo









Ø 20 mm
25 mm
4...8 mm
nie dotyczy

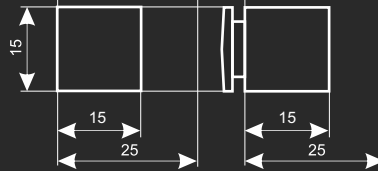
 **Liverpool 25/ 2-10**

-  25 mm
-  25 mm
-  2...10 mm
-  Ø 16 mm

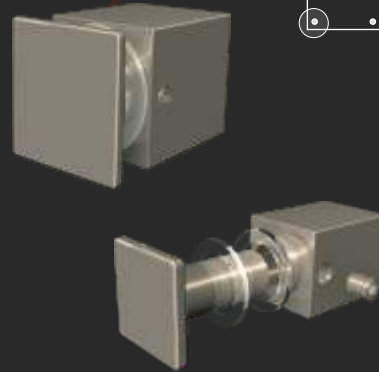


 **Liverpool 15/ 2- 5**
 **Liverpool 15/ 6-10**





-  15 mm
-  15 mm
-  2...10 mm
-  Ø 11 mm

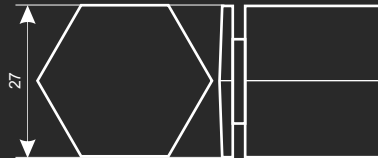




LIVERPOOL







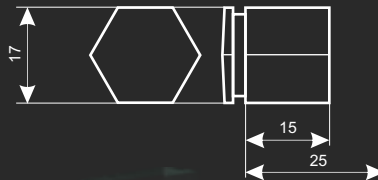
 **London 25/ 2-10**

-  27 mm
-  25 mm
-  2...10 mm
-  Ø 16 mm

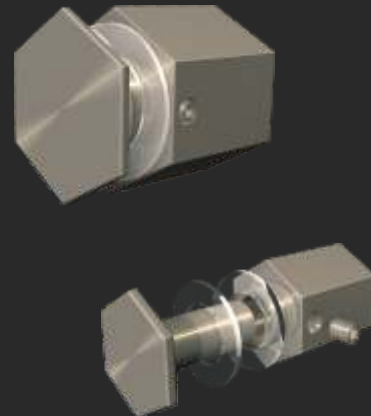
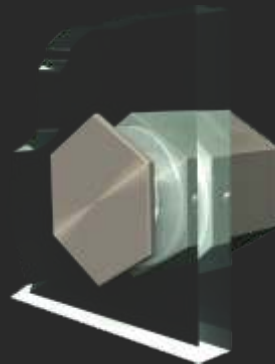


 **London 15/ 2- 5**
 **London 15/ 6-10**

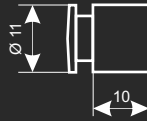
-  17 mm
-  15 mm
-  2...10 mm
-  Ø 11 mm



LONDON



WIEN



Wien / 1- 4
Wien / 5- 8



Ø 11 mm



10 mm

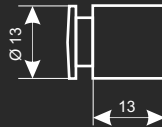


1...8 mm



Ø 9 mm

LINZ



Linz



Ø 13 mm



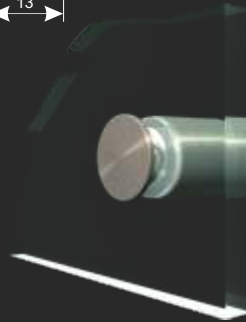
13 mm



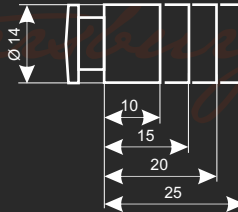
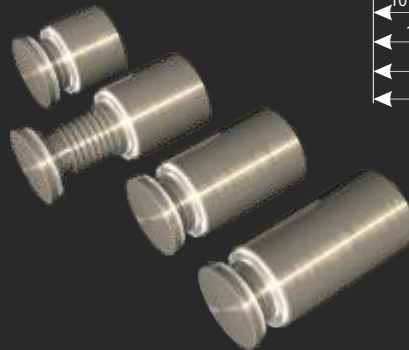
3...8 mm



Ø 10...11 mm



St. PETERSBURG



St. Petersburg 10 / 3- 8



Ø 14 mm



10 mm



3...8 mm



Ø 11 mm



St. Petersburg 15 / 3-12



St. Petersburg 20 / 3-12



St. Petersburg 25 / 3-12



Ø 14 mm



15 / 20 / 25 mm



3...12 mm

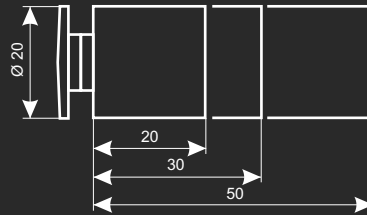


Ø 11 mm

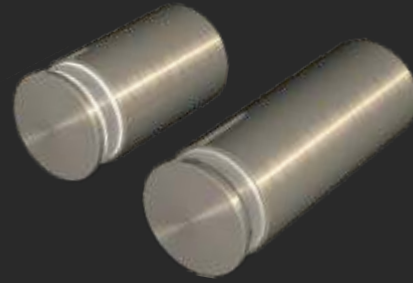
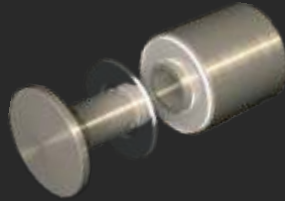


Madrid 20
Madrid 30
Madrid 50

Ø 20 mm
20 / 30 / 50 mm
3...18 mm
Ø 11...14 mm

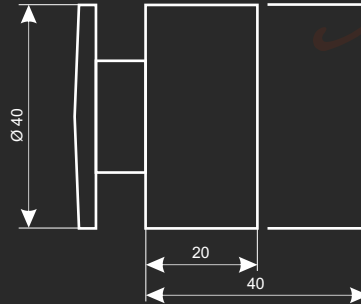


Madrid **MADRID**

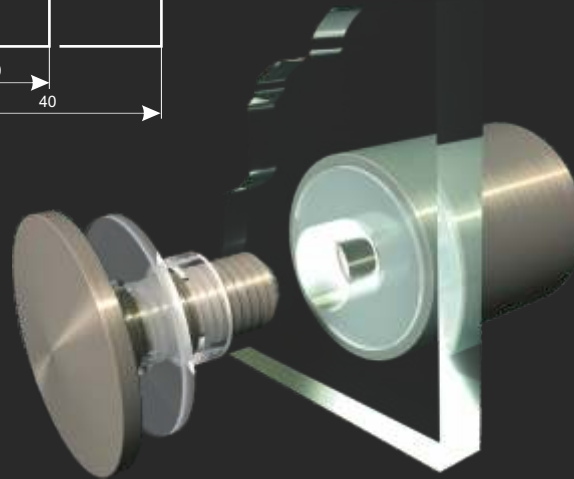
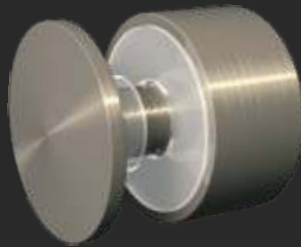


München 20 / 8-12
München 40 / 8-20

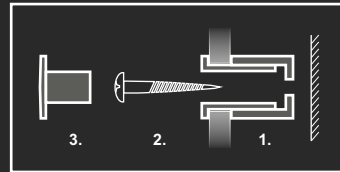
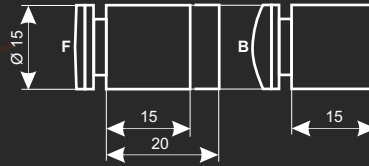
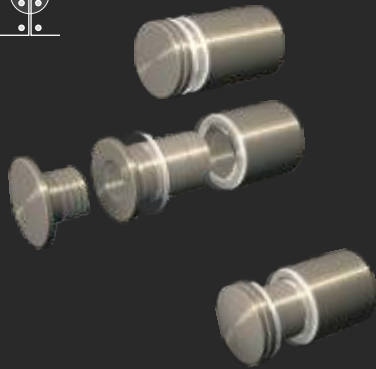
Ø 40 mm
20 / 40 mm
8...20 mm
Ø 20 mm








München **MÜNCHEN**








SAMARA



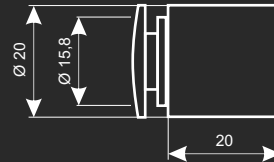
 Samara 15 F / 2-12
 Samara 20 F / 2-20

 Ø 15 mm
 15 / 20 mm
 2...20 mm
 Ø 12 mm

 Samara B / 2-12

 Ø 15 mm
 15 mm
 2...12 mm
 Ø 12 mm





MOSKAU

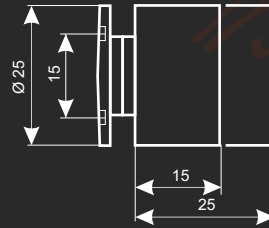


 Moskau
 Ø 20 mm
 20 mm
 2 x 10 mm
 Ø1 12,5 mm
 Ø2 16,5 mm

Wyłącznie do tworzyw sztucznych

Barcelona 15 / 3-10





-  Ø 25 mm
-  15 mm
-  3...10 mm
-  Ø 16 mm







BARCELONA

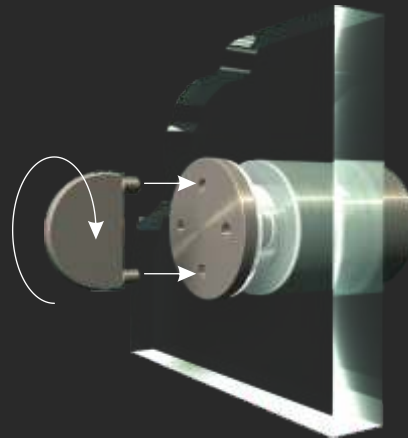


Barcelona 15 / 12-18





-  Ø 25 mm
-  15 mm
-  12...18 mm
-  Ø 16 mm

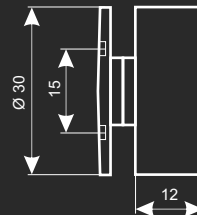
Barcelona 25 / 3-18

-  Ø 25 mm
-  25 mm
-  3...18 mm
-  Ø 16 mm

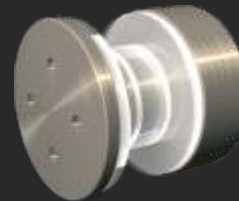


Köln / 8-20

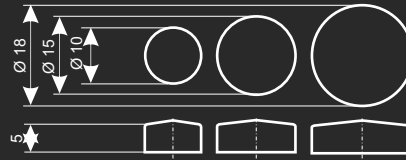
-  Ø 30 mm
-  12 mm
-  8...20 mm
-  Ø 20 mm


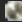





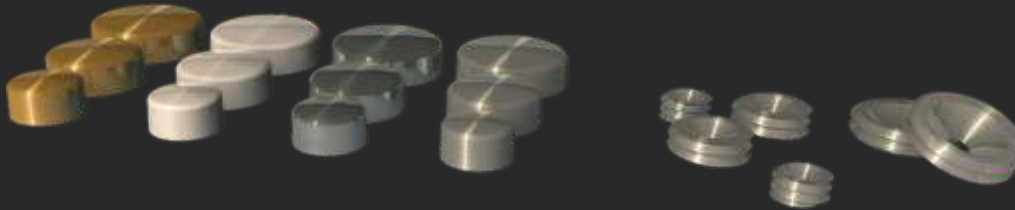
KÖLN



BERN



-  Stal nierdzewna VA
-  Chrom połysk GC
-  Chrom mat MC
-  Żółty połysk GO
-  Ø 10 / 15 / 18 mm



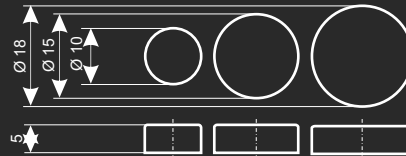
Bern-18-VA
Bern-15-VA
Bern-10-VA

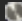

Bern-18-GC
Bern-15-GC
Bern-10-GC

Bern-18-MC
Bern-15-MC
Bern-10-MC

Bern-18-GO
Bern-15-GO
Bern-10-GO

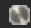



GENF





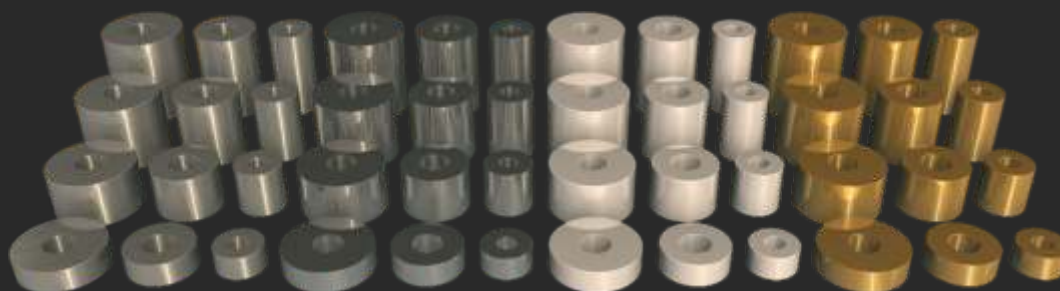
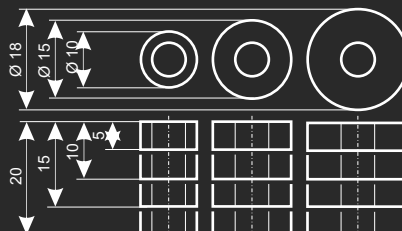
-  Stal nierdzewna VA
-  Ø 10 / 15 / 18 mm



Genf-18-VA
Genf-15-VA
Genf-10-VA

-  Stal nierdzewna VA
-  Chrom płysk GC
-  Chrom mat MC
-  Złoty połysk GO

-  Ø 10 / 15 / 18 mm
-  5 / 10 / 15 / 20 mm



Basel-18-20-VA
Basel-18-15-VA
Basel-18-10-VA
Basel-18-05-VA

Basel-18-20-GC
Basel-18-15-GC
Basel-18-10-GC
Basel-18-05-GC

Basel-18-20-MC
Basel-18-15-MC
Basel-18-10-MC
Basel-18-05-MC

Basel-18-20-GO Ø 18 mm
Basel-18-15-GO
Basel-18-10-GO
Basel-18-05-GO

Basel-15-20-VA
Basel-15-15-VA
Basel-15-10-VA
Basel-15-05-VA

Basel-15-20-GC
Basel-15-15-GC
Basel-15-10-GC
Basel-15-05-GC

Basel-15-20-MC
Basel-15-15-MC
Basel-15-10-MC
Basel-15-05-MC

Basel-15-20-GO Ø 15 mm
Basel-15-15-GO
Basel-15-10-GO
Basel-15-05-GO

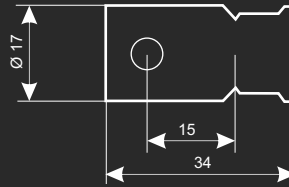
Basel-10-20-VA
Basel-10-15-VA
Basel-10-10-VA
Basel-10-05-VA

Basel-10-20-GC
Basel-10-15-GC
Basel-10-10-GC
Basel-10-05-GC

Basel-10-20-MC
Basel-10-15-MC
Basel-10-10-MC
Basel-10-05-MC

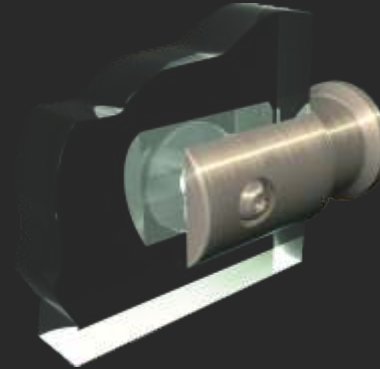
Basel-10-20-GO Ø 10 mm
Basel-10-15-GO
Basel-10-10-GO
Basel-10-05-GO

GDANSK

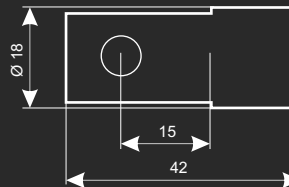


Gdansk

- Ø 17 mm
- 1...8 mm
- 15 mm
- Ø 4...6 mm

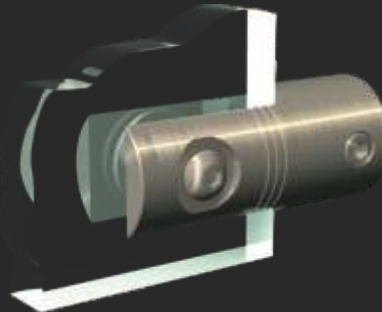


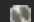

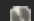
POZNAN






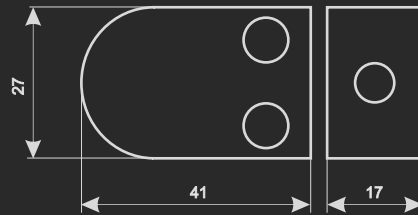
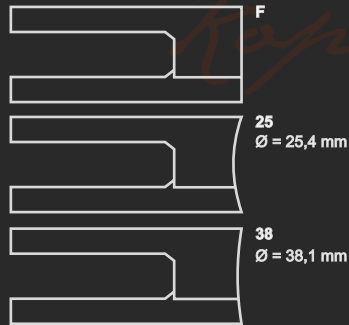
Poznan

- Ø 18 mm
- 4...10 mm
- 15 mm
- Ø 5 mm

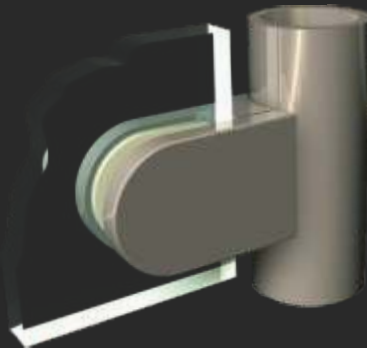
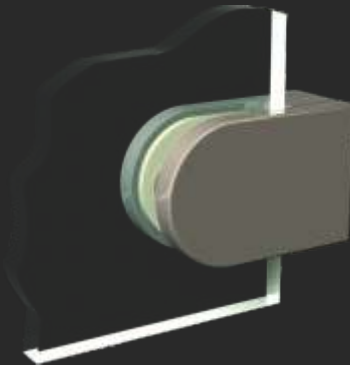
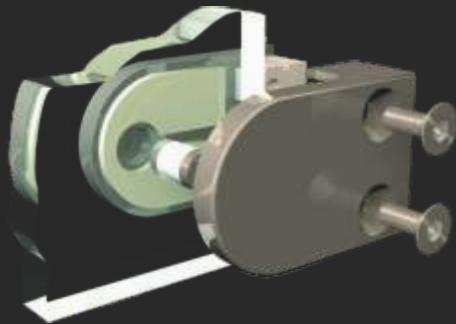


-  Kopenhagen F
-  Kopenhagen 25
-  Kopenhagen 38

 26 x 41 mm
 2 / 4 / 6 / 8 mm
 nie dotyczy



KOPENHAGEN

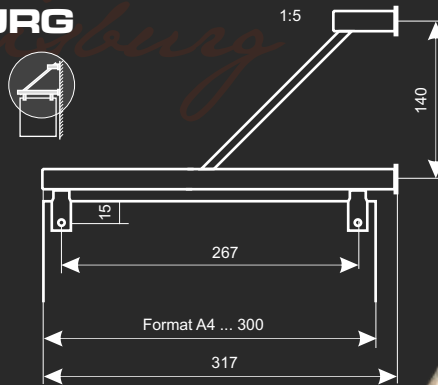


- Kopenhagen D 2
- Kopenhagen D 4
- Kopenhagen D 6
- Kopenhagen D 8

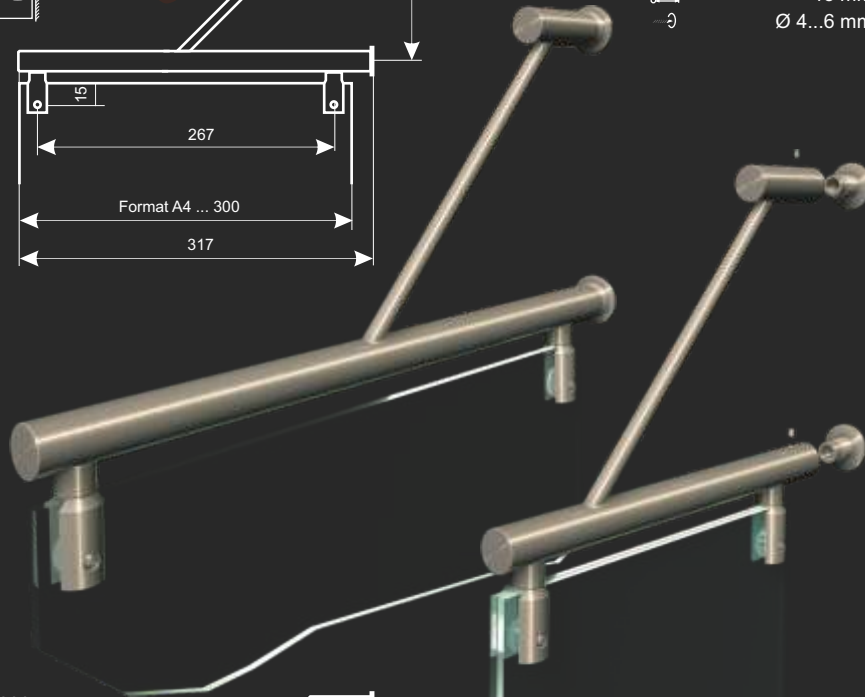


Gumowa podkładka

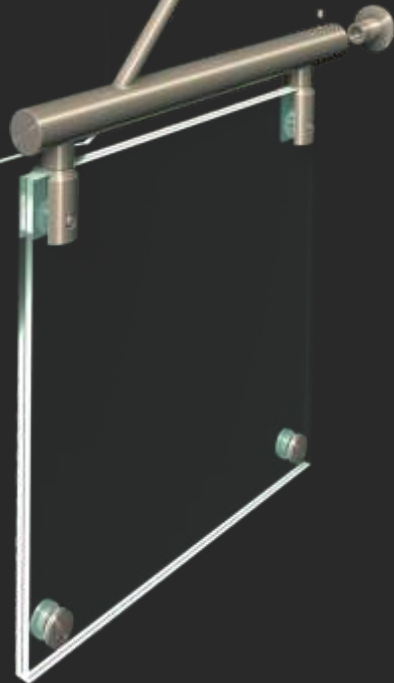
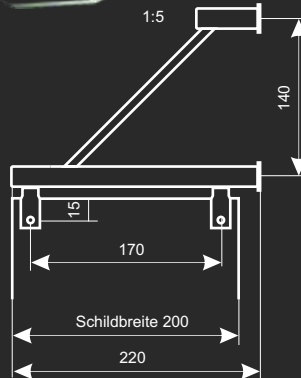
DUISBURG



- Duisburg 300
- 2 ... 8 mm
- 15 mm
- Ø 4...6 mm



- Duisburg 200
- 2 ... 8 mm
- 15 mm
- Ø 4...6 mm





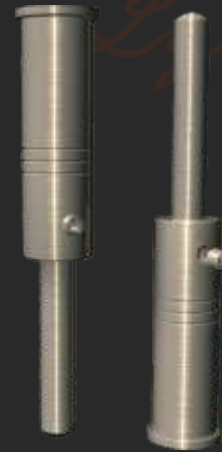
Lyon



Ø 18 mm



Ø 6 mm



LYON



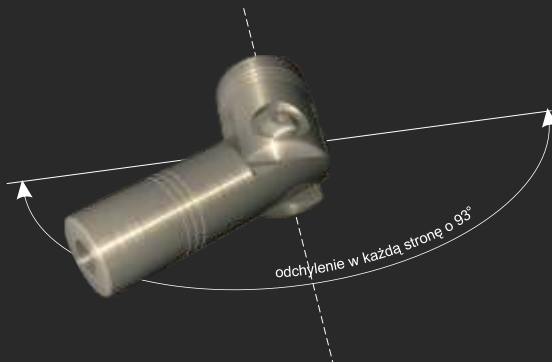
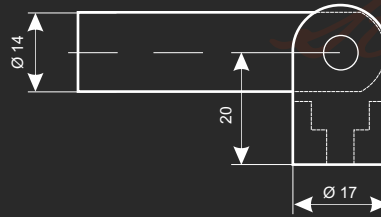
Stockholm



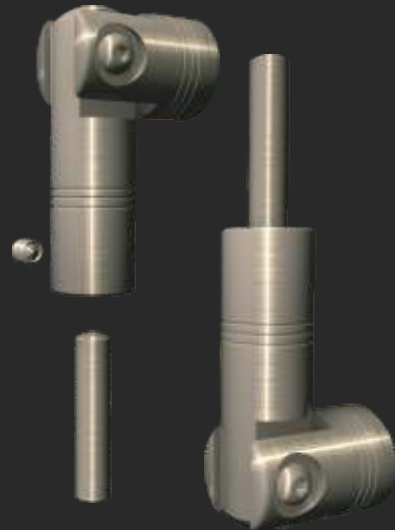
Ø 14 mm



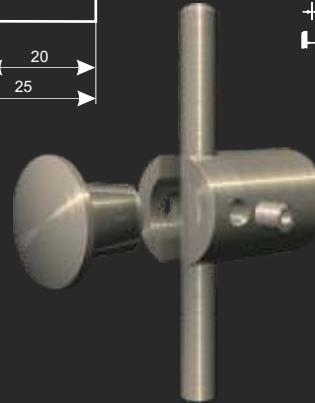
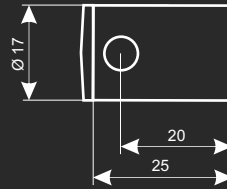
Ø 6 mm



STOCKHOLM



DUBLIN



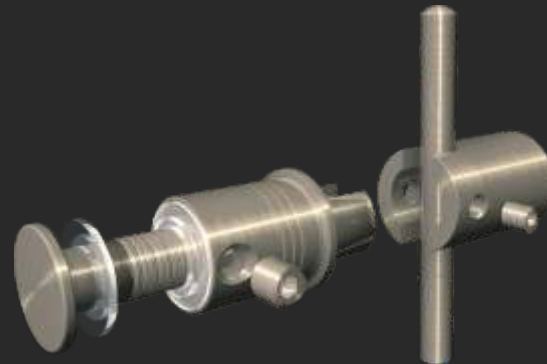
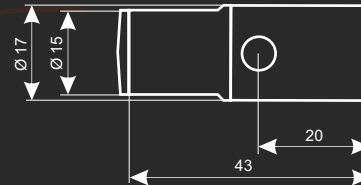
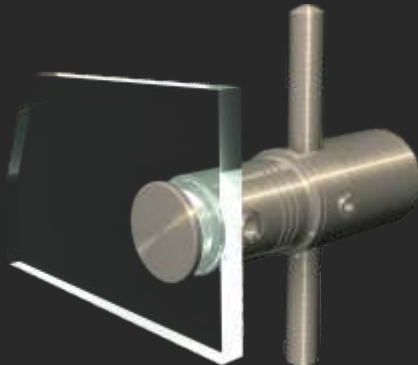
Dublin

Ø 17 mm

Ø 6 mm

20 mm

BELFAST



Belfast

Ø 17 mm

Ø 6 mm

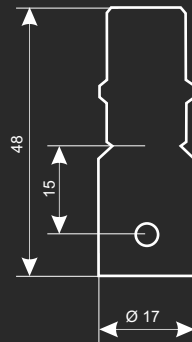
20 mm

11 mm



Leipzig

- Ø 17,0 mm
- Ø 6 mm
- 1...8 mm
- Ø 4...6 mm
- 15 mm

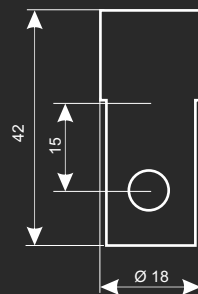


LEIPZIG

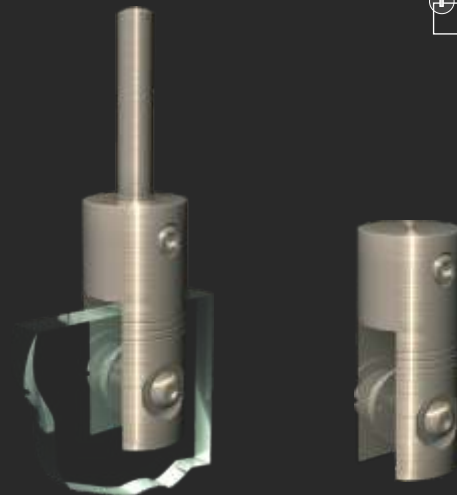


Krakau

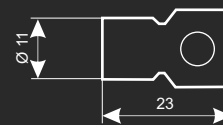
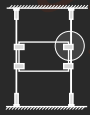
- Ø 18 mm
- Ø 6 mm
- 3...10 mm
- Ø 5... 6 mm
- 15 mm



KRAKAU



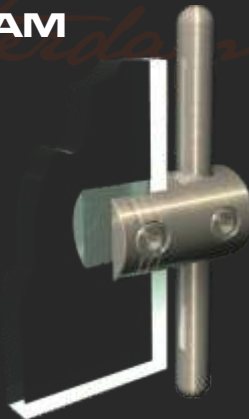
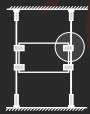
APELDOORN



Apeldoorn
 Ø 11,0 mm
 Ø 6 mm
 2...6 mm
 nie dotyczy

Wyłącznie do tworzyw sztucznych

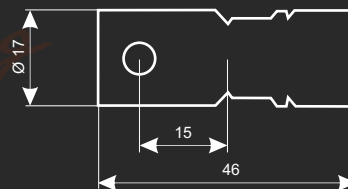
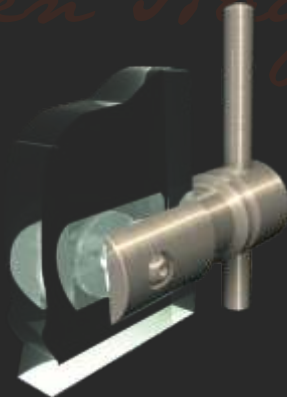
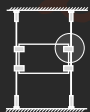
ROTTERDAM



Rotterdam
 Ø 14,0 mm
 Ø 6 mm
 3...8 mm
 keine

Wyłącznie do tworzyw sztucznych

DEN HAAG



Den Haag
 Ø 17,0 mm
 Ø 6 mm
 1...8 mm
 Ø 4...6 mm



Utrecht



Ø 11 mm



Ø 6 mm



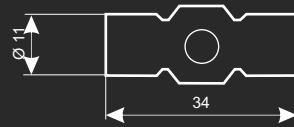
2...6 mm



nie dotyczy

Wyłącznie

do tworzyw sztucznych



UTRECHT



Amsterdam



Ø 14 mm



Ø 6 mm



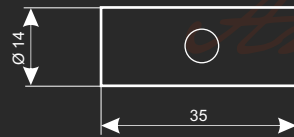
3...6 mm



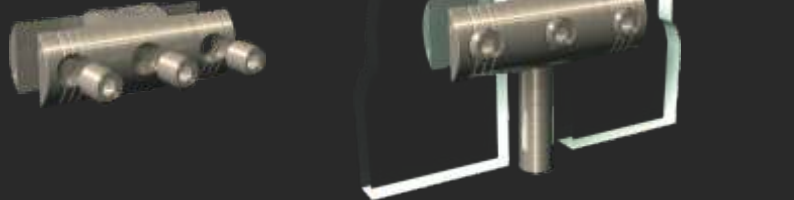
nie dotyczy

Wyłącznie

do tworzyw sztucznych



AMSTERDAM



Eindhoven



Ø 17 mm



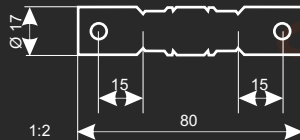
Ø 6 mm



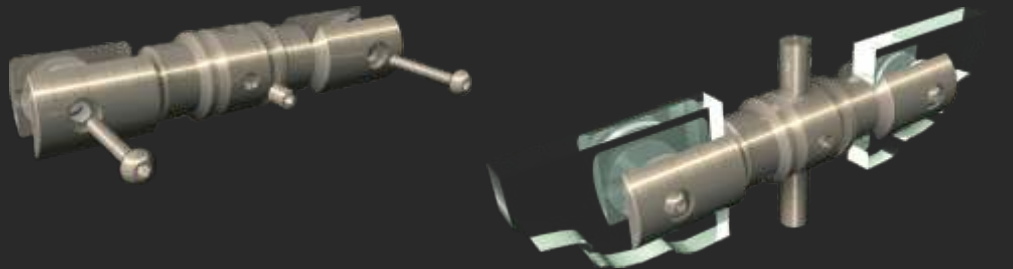
1...8 mm



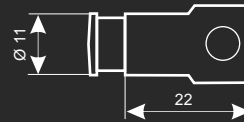
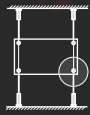
Ø 4...6 mm



EINDHOVEN



BURGAS

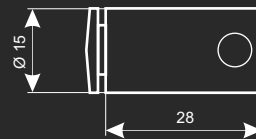
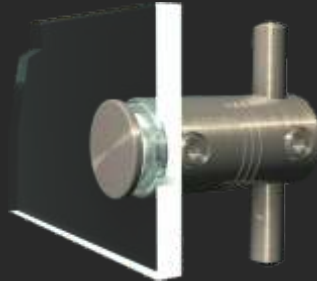
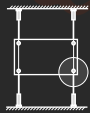


Burgas

- Ø 11 mm
- Ø 6 mm
- 2...5 mm
- Ø 9 mm

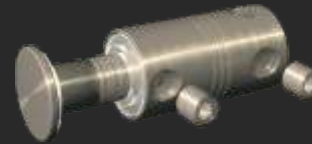


SOFIA

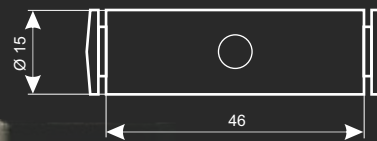
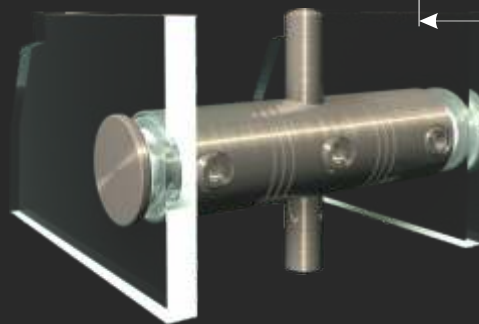
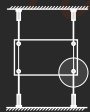


Sofia

- Ø 15 mm
- Ø 6 mm
- 2...10 mm
- Ø 11 mm



VARNA



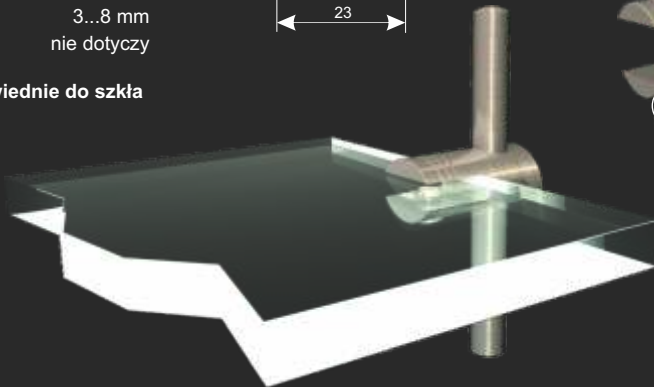
Varna

- Ø 15 mm
- Ø 6 mm
- 2...6 mm
- Ø 11 mm

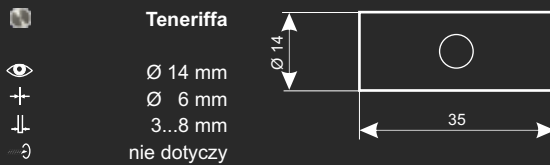
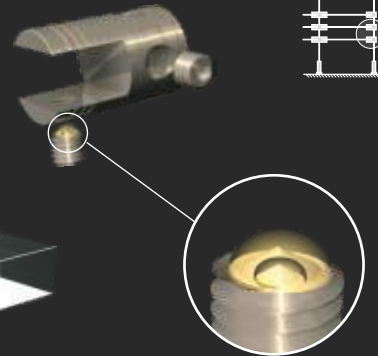




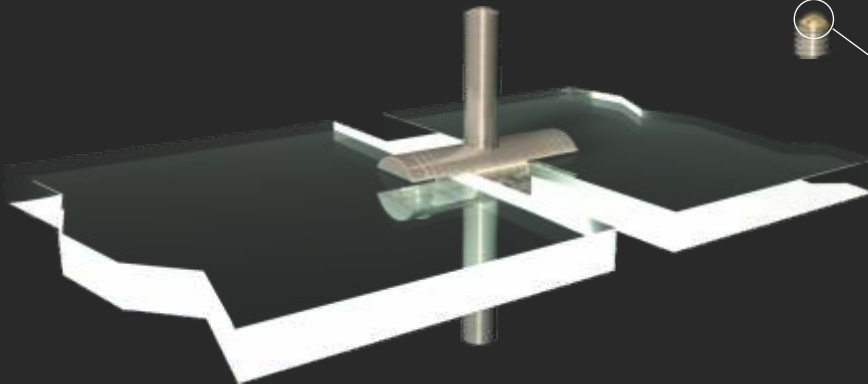
Odpowiednie do szkła



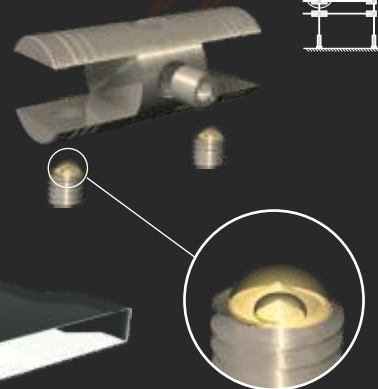
LANZAROTE



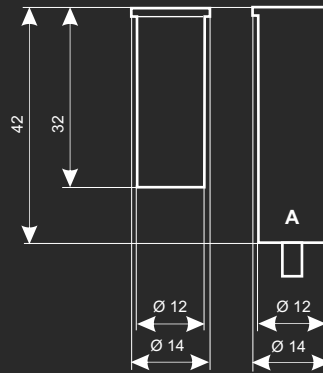
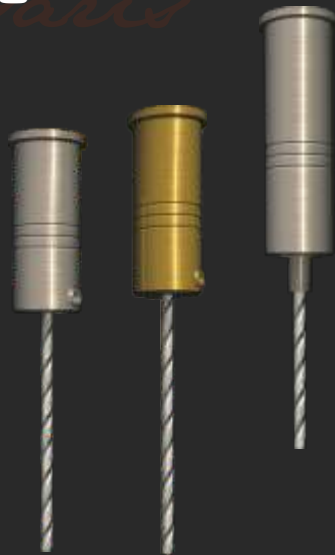
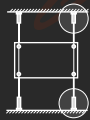
Odpowiednie do szkła



TENERIFFA



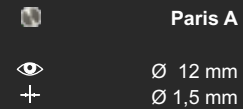
PARIS



Paris
G Paris

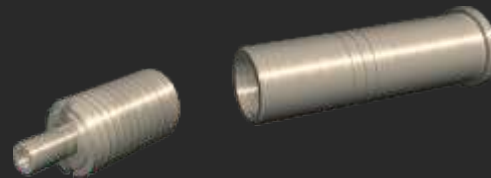
Ø 12 mm
Ø 1,5...2 mm

Automatyczny naciąg

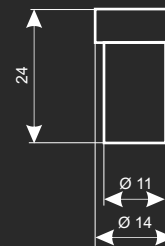


Paris A

Ø 12 mm
Ø 1,5 mm



MARSEILLE



Marseille

Ø 11 mm
Ø 1,5 mm

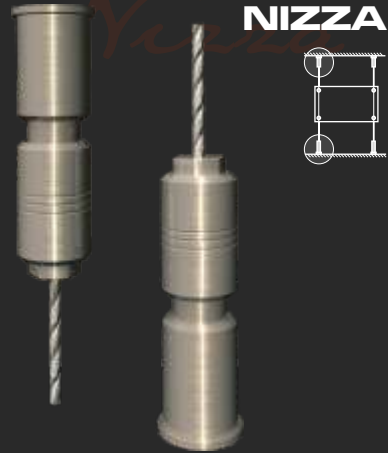
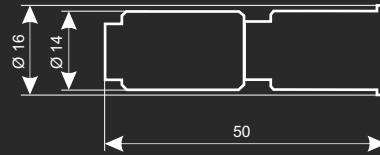




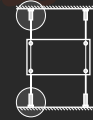
Nizza



Ø 14 mm
Ø 1,5...2 mm



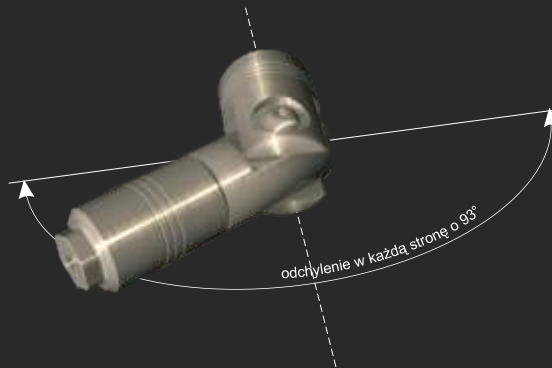
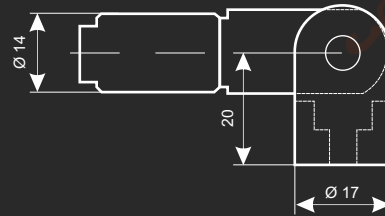
NIZZA



Helsinki



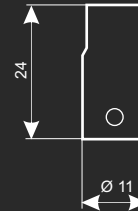
Ø 14 mm
Ø 1,5...2 mm
20 mm



HELSINKI



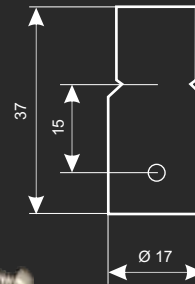
OSLO



Oslo

- Ø 11 mm
- Ø 1,5 mm
- 1...6 mm
- Ø 4...5 mm
- 9 mm

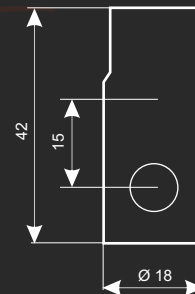
DORTMUND



Dortmund G Dortmund

- Ø 17 mm
- Ø 1,5...2 mm
- 1...8 mm
- Ø 4...6 mm
- 15 mm

FRANKFURT



Frankfurt

- Ø 18 mm
- Ø 1,5...2 mm
- 3...10 mm
- Ø 5...6 mm
- 15 mm



Schwerin



Ø 11 mm



Ø 1,5 mm

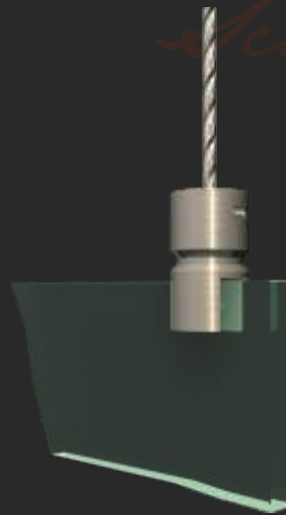
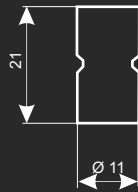


3...6 mm



nie dotyczy

Wyłącznie do tworzyw sztucznych



SCHWERIN



Oldenburg



Ø 14 mm



Ø 1,5 mm

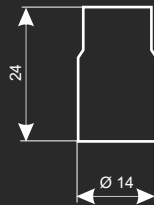


3...6 mm

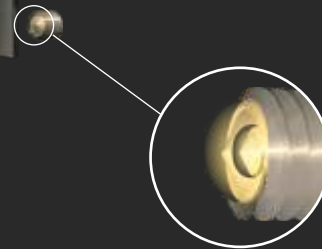


nie dotyczy

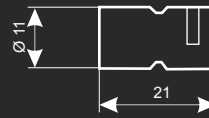
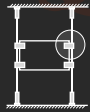
Odpowiednie do szkła



OLDENBURG



LÜTTICH



Lüttich



Ø 11,0 mm



Ø 1,5...2 mm



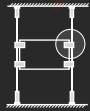
3...6 mm



nie dotyczy

Wyłącznie do tworzyw sztucznych

BRÜSSEL



Brüssel



Ø 14,0 mm



Ø 1,5...2 mm



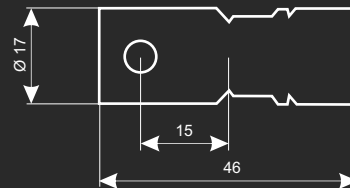
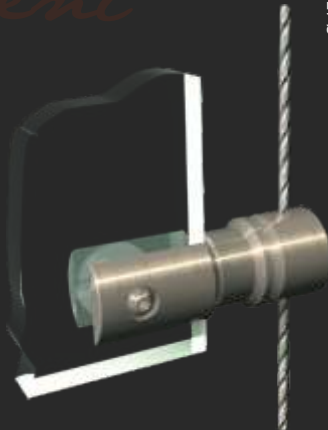
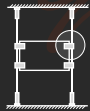
3...8 mm



nie dotyczy

Wyłącznie do tworzyw sztucznych

GENT



Gent



Ø 17,0 mm



Ø 1,5...2 mm



1...8 mm

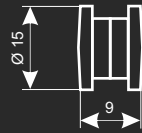


Ø 4...6 mm



Budapest

Ø 15 mm
5...10 mm
Ø 11 mm

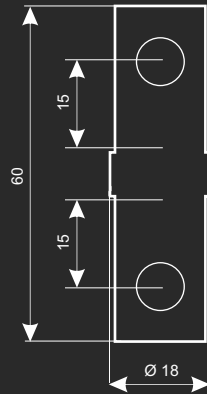


BUDAPEST

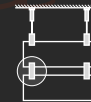


Istanbul

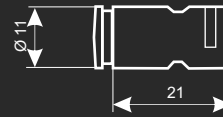
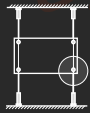
Ø 18 mm
3...10 mm
Ø 5...6 mm
15 mm



ISTANBUL

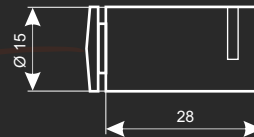
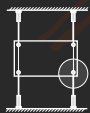


ARAD

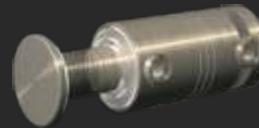


	Arad
	Ø 11 mm
	Ø 1,5...2 mm
	2...5 mm
	Ø 9 mm

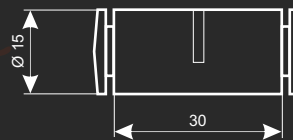
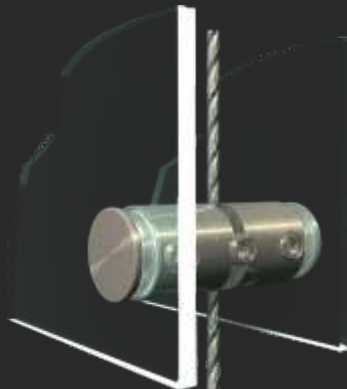
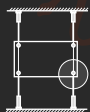
BUKAREST



	Bukarest
	Ø 15 mm
	Ø 1,5...2 mm
	2...10 mm
	Ø 11 mm







KONSTANCA



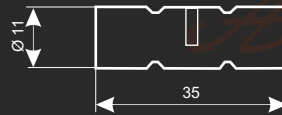
	Konstanca
	Ø 15 mm
	Ø 1,5...2 mm
	2...6 mm
	Ø 11 mm



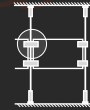
 **Anderlecht**

-  Ø 11 mm
-  Ø 1,5...2 mm
-  3...6 mm
-  nie dotyczy





Wyłącznie do tworzyw sztucznych



ANDERLECHT



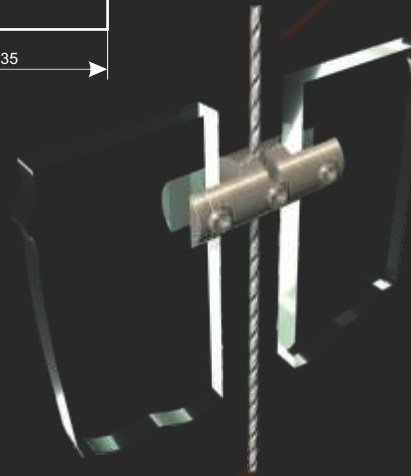
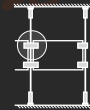
 **Antwerpen**

-  Ø 14 mm
-  Ø 1,5...2 mm
-  3...8 mm
-  nie dotyczy





Wyłącznie do tworzyw sztucznych

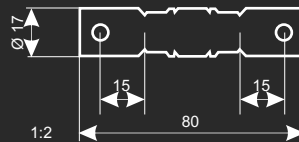


ANTWERPEN

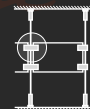


 **Brügge**

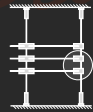
-  Ø 17 mm
-  Ø 1,5...2 mm
-  1...8 mm
-  Ø 4...6 mm



BRÜGGE



IBIZA

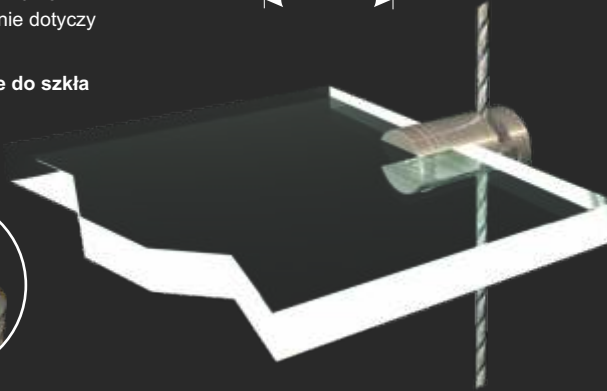
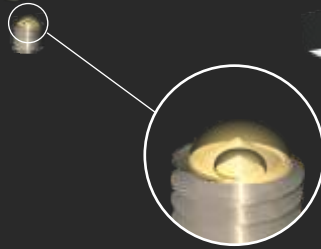


Ibiza

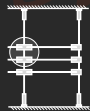
\varnothing 14 mm
 \varnothing 1,5...2 mm
 3...8 mm
 nie dotyczy



Odpowiednie do szkła

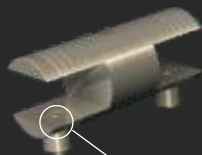


MALLORCA

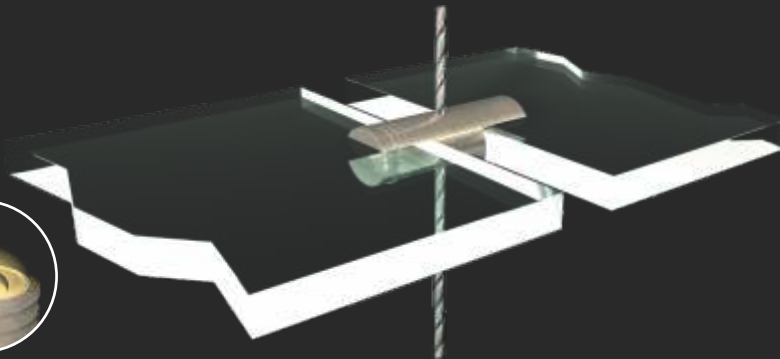
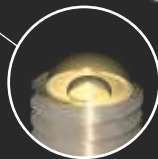


Mallorca

\varnothing 14 mm
 \varnothing 1,5...2 mm
 3...8 mm
 nie dotyczy



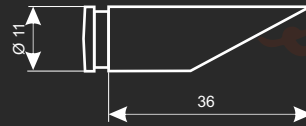
Odpowiednie do szkła





Salzburg

Ø 11 mm
28°
3...8 mm
15 mm
Ø 9 mm

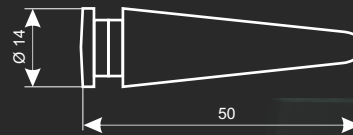


SALZBURG

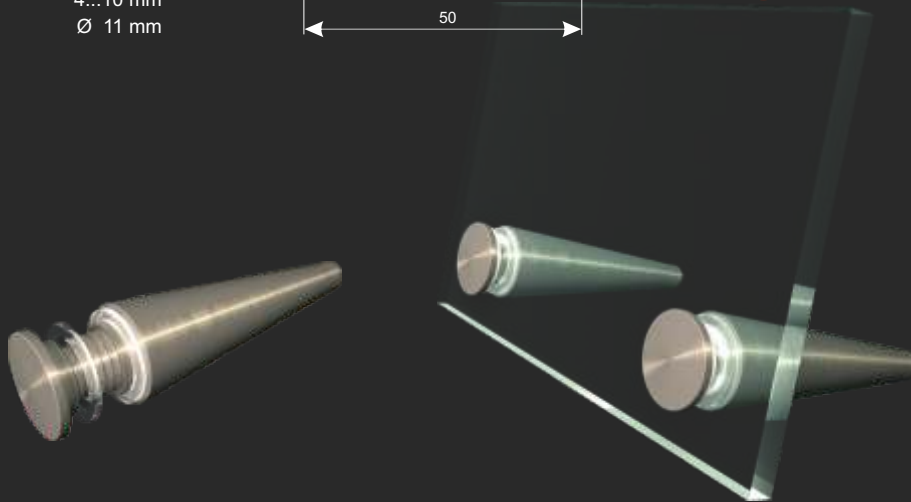


Graz

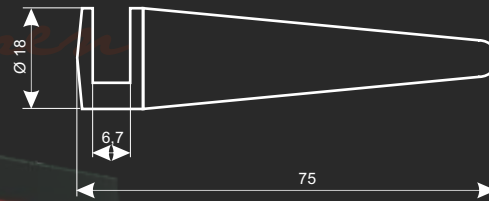
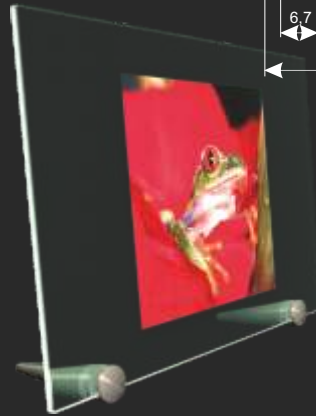
Ø 14 mm
4...10 mm
Ø 11 mm



GRAZ



BREMEN



Bremen



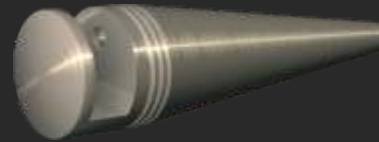
Ø 18 mm



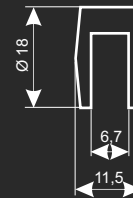
3...6 mm



nie dotyczy



KIEL



Kiel



Ø 18 mm



...6 mm



nie dotyczy

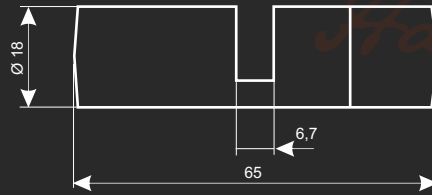




Hamburg I



Ø 18 mm
3...6 mm
nie dotyczy



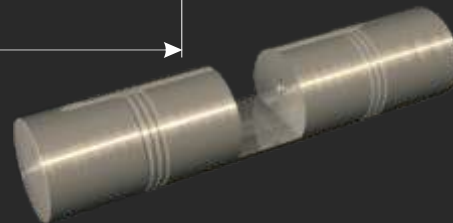
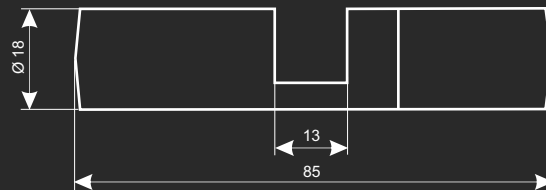
HAMBURG



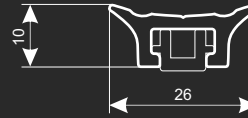
Hamburg II



Ø 18 mm
10...13 mm
nie dotyczy



DONAU



Donau



26 x 10 mm
max. długość 2500 mm

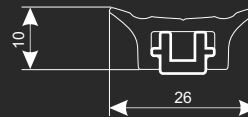
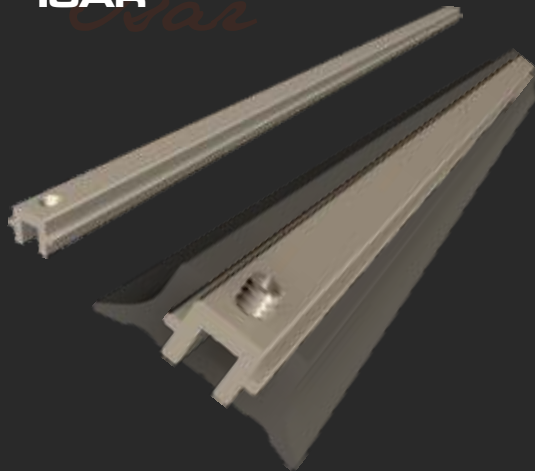


KORFU



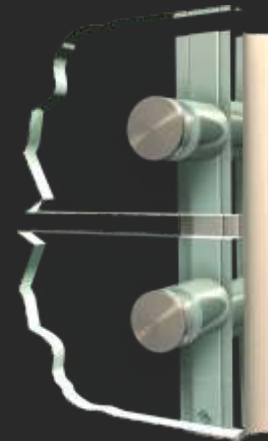
Korfu

ISAR



Isar

max. długość 2500 mm





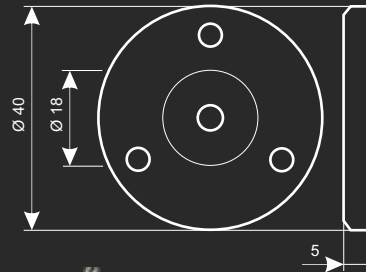
Athen



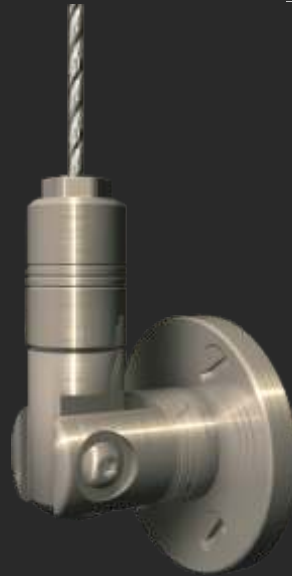
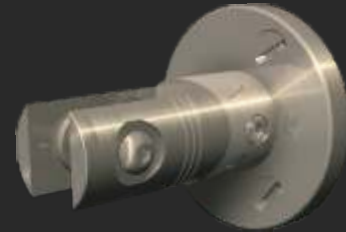
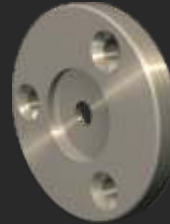
Ø 40 mm
+ 5 mm



Gdansk
Poznan
Dublin
Belfast
Lyon
Stockholm
Nizza
Helsinki
Paris



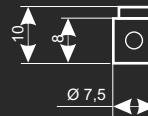
Athen **ATHEN**



Kos



Ø 1,5...2 mm



Kos **KOS**





Kreta 148

30 x 148 mm
Ø 9 mm

Kreta 150

30 x 150 mm
Ø 9 mm

Kreta 210

30 x 210 mm
Ø 9 mm

▶ Berlin
Florenz

